

SAN MATEO COUNTY CRIME REPORT

OCTOBER 2002

Criminal Justice Council of San Mateo County



610 Elm Street, Suite 200
San Carlos, CA 94070
(650) 802-4326

Cynthia A. Brandon, Executive Director
Monica Airo, Executive Assistant
Melissa Mortz, Crime Report Assistant

Criminal Justice Council Members

CHAIRPERSON

Barbara Carr
Mayor, Pacifica

Wesley Bowling
Police Chief, East Palo Alto

Loren Buddress
Chief Probation Officer

Rhonda Ceccato
Public Member

Randall Chinn
Public Member

Mark Church
Supervisor, SMCo.

Thomas Clark
Public Member

William Conwell
Councilman, Atherton

John Digiacinto
SMCo. Bar Association

Patricia Foster
Councilwoman, E. Palo Alto

James Fox
District Attorney

Joanne Gilbert, M.Ed.
Public Member

Floyd Gonella, Ph.D.
Supt. of Schools

Carole Groom
Councilwoman, San Mateo

Frank E. Hedley
City Manager, San Bruno

Crime Report Assistant:
Melissa Mortz

VICE CHAIR

Nicholas Jellins
Councilman, Menlo Park

Donald Heiman
Public Member

Don Horsley
Sheriff, San Mateo Co.

Patrick Kelly
Public Member

Barbara J. Mallach
Judge, San Mateo County

Gary McLane
Police Chief, Daly City

Craig Parsons
Judge, San Mateo County

Daniel F. Quigg
Councilman, Millbrae

Sepi Richardson
Councilwoman, Brisbane

Ira Ruskin
Councilman, Redwood City

Paul Scannell
Asst. County Manager

Randy Sonnenberg
Police Chief, Foster City

Deborah Wilder
Councilwoman, Foster City

EXECUTIVE DIRECTOR
Cynthia Brandon

EXECUTIVE ASSISTANT
Monica Airo

Youth Commission Members:
Morgan Early & Daisy Lara

SAN MATEO COUNTY CRIME REPORT

Criminal Justice Council of San Mateo County

Written by Cynthia Brandon, Monica Airo & Melissa Mortz

Executive Summary

The idea of the San Mateo County Crime Report was developed by the Criminal Justice Council members, and is designed to guide us in our mission to address important criminal justice issues. The Crime Report came together with exceptional efforts from CJC members, staff and local agencies. Included in the Report are several basic issues that are important to the development and understanding of the communities, crime and demographics in the County. The findings can be indicators of what the County can do next, and can guide their efforts in creating and implementing new programs. Many interpretations can be made from the data shown, but we hope to present general information on crime and culture in order to provide our members with a broad vision. As discussed in the following pages, certain crimes are on the increase, while others continue to decline. Therefore, crime prevention strategies are necessary in order to help ensure a safer community and keep the crime statistics down. Current efforts are commendable, and the Criminal Justice Council admires those individuals and organizations that strive to make a difference in the lives of others and in the criminal justice system. Results of the County Crime Report can be used to further the mission of the CJC, and help to narrow down the focus for future projects. Further research and the latest statistics will be applied to upcoming reports. Included in this report are the topics of:

- Adult Crime
- Juvenile Crime
- Domestic Violence
- Elder and Dependent Abuse
- Child Abuse
- School Dropout Rate
- Vehicle Theft
- Unemployment Rate
- Homelessness

The data is specific to San Mateo County, but reference may be made to state and national numbers. Some information was only available through the year 2000, but recently reports are starting to show data from the year 2001. We hope to reflect these recent numbers in the report updates.

Adult crimes have gone steadily down since 1996, and both felonies and misdemeanors are at their lowest point since 1993. Juvenile crimes are also displaying an overall decline since 1996, with slight variations in the status offenses. The only noticeable increase is in juvenile felony property offenses (e.g. burglary, theft) in the year 2000. Domestic Violence incidents (or calls for assistance from police departments) decreased from 1996 to 1999, but then started an upward trend in 2000 and 2001. The number of those cases filed by the District Attorney's Office follows the same trend as the calls for assistance. There has been a sharp increase in Elder and Dependent abuse reports as well as an increase in types of abuse each victim sustains. Child Abuse referrals

decreased from 1998 to 2000, but increased again in the year 2001. Reasons for emergency responses, or the types of crimes that the victims incur, are also rising again. The number of substantiated child maltreatment cases, however, has continually declined over the years. The School Dropout Rate for San Mateo County students in grades 9 – 11 was at a low in the 1997/98 and 1998/99 school years, but increased in the 1999/2000 school year. Recent percentages, however, show that the dropout rate decreased again in 2000-01. Within this report we show the comparisons in the past year between the dropout rates of the school districts and ethnicities. The number of Vehicle Thefts in San Mateo County fluctuates, but the 2001 numbers show that there were more stolen vehicles than in any of the past years mentioned. Of the recovered stolen vehicles, 70% were found intact. Unemployment rates in the County seem to be on the rise, as seen in 2001, even though the labor force slightly fell in the same year. The most difficult data to obtain was that of homelessness. The number of homeless persons has increased slightly since 1994, with the most recent data collected in 1998 showing 4,545 people that were homeless. The rise in housing prices may lead to displaced individuals and an increased need for affordable housing. The number of doubled-up households continues to increase. Although the average and median housing prices in the County have slightly decreased in 2001, unemployment seems to be rising, and may contribute to more people that are homeless. Efforts to obtain affordable housing should remain a priority, as well as services for those that continue to be homeless for a variety of reasons.

Adult Crime

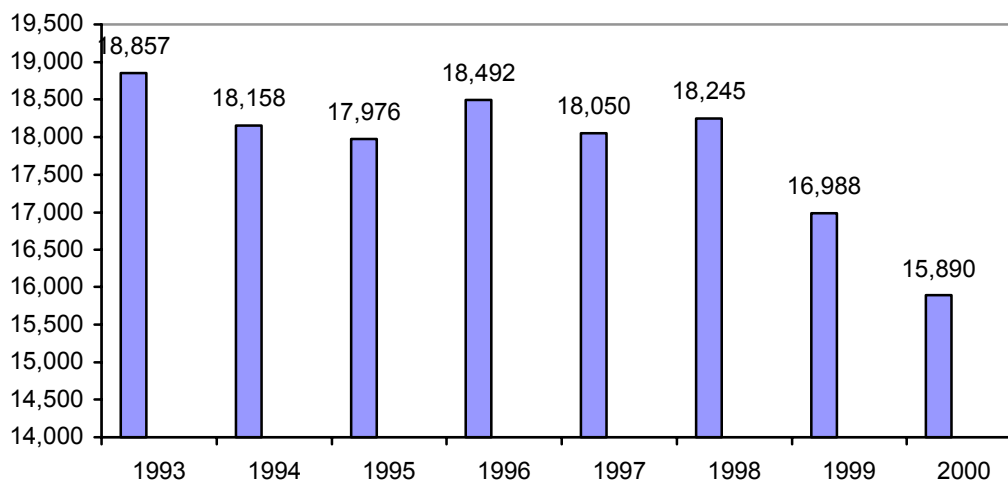
Adult Arrests

The total number of adult crimes in San Mateo County has fluctuated from year to year. In 1993, the county experienced a high overall crime rate in both juvenile and adult crimes, while the following years displayed varying crime trends. Since 1998, however, adult crimes have continually decreased.

Between the years of 1993 through 1998, the total number of adult crimes in San Mateo County sustained an average slightly above 18,000 incidents. However, from 1998 to 2000 there was a significant decrease of 13%, from 18,245 arrests in 1998 to 15,890 in 2000. Also, while the population of adults over the age of 18 has increased from 481,000 in 1999 to 488,000 in 2000, the number of adult crimes decreased by 7%. Figure 1 shows the total number of adult crimes from 1993 to 2000 in San Mateo County.

Figure 1: Adult Arrests 1993 – 2000

Source: San Mateo County 2000 Criminal Justice Profile



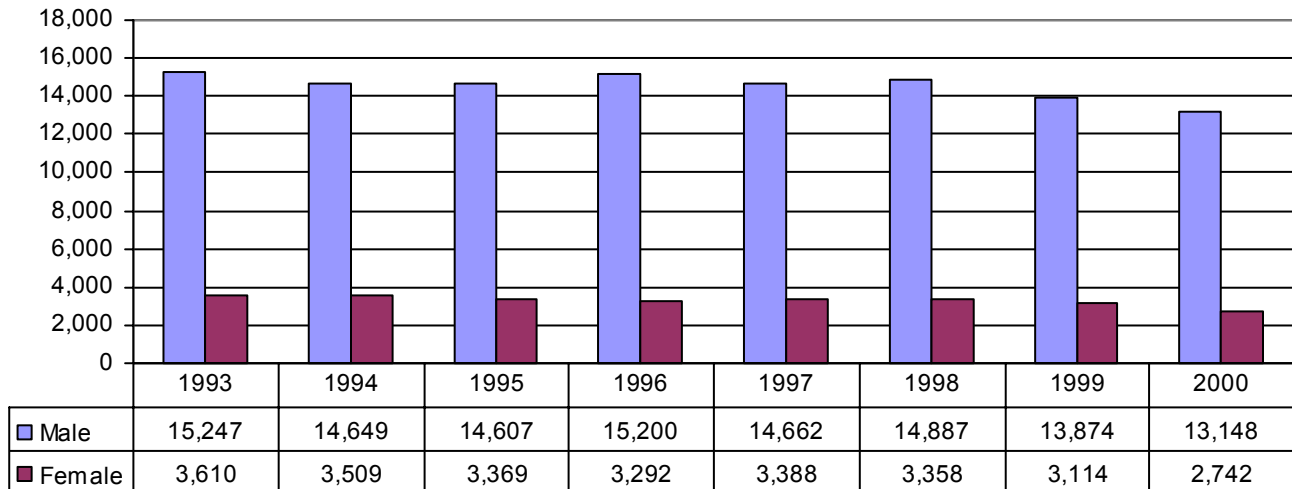
Gender

As shown in Figure 2 below, the total number of crimes committed by adult males is consistently higher than that of adult females each year. Since 1998, the number of offenses committed by males has decreased by almost 12%, from 14,887 crimes in 1998 to 13,148 in 2000. Crimes committed by females started a downward trend in the year 1997 with 3,388 offenses to 2,742 offenses in 2000, a decrease of 19%. As the chart shows, both genders have committed far fewer offenses in the year 2000 compared to the previous seven years.

For both males and females, the highest number of felony arrests was drug related. In 2000, there were 1,374 male felony drug arrests and 288 female arrests. Assault was the second

highest felony category for males at 882 arrests and the third highest for females at 169 arrests. The second highest category for female felony arrests was theft at 171.

Figure 2: Adult Arrests by Gender
 Source: San Mateo County 2000 Criminal Justice Profile



Types of Crime – Felonies/Misdemeanors/Subcategories

In the year 2000, the number of adult misdemeanor crimes represented 71% of the total offenses committed, while felonies represented 29%. This ratio has remained fairly constant over the years. Below, Table 1 displays the breakdown of various types of adult crimes, both felony and misdemeanor arrests. Since the year 1997, felony arrests have continually decreased, while the number of misdemeanor arrests has decreased since 1998. As Table 1 shows, however, the number of both misdemeanor crimes and felony crimes are lower in 2000 than in the previous five years. Certain felonies showed a one-year increase, including assault, kidnapping, property offenses and sex offenses. The felony category with the highest amount of crimes against a person was assault with 1,051 arrests in 2000. Homicide offenses decreased from 17 in 1999 to 4 in 2000, the lowest in a decade.

Misdemeanor arrests dropped from 13,092 offenses in 1995 to 10,950 offenses in 2000, an 8% decrease overall, with the greatest change between 1999 and 2000, from 12,022 to 10,950 arrests. The majority of misdemeanor offenses are Driving Under the Influence (DUI), with 3,473 arrests in the year 2000. Although DUI's constitute the largest number of arrests in San Mateo County, the number of offenses has decreased substantially from 1995 to 2000.

Table 1: Adult Arrests by Category 1995 -2000

Source: San Mateo County 2000 Criminal Justice Profile

	1995	1996	1997	1998	1999	2000
<i>Felony Arrests</i>	4,884	5,182	5,628	5,348	4,966	4,846
<i>Violent Offenses</i>	1,415	1,400	1,457	1,234	1,096	1,187
Homicide	19	16	12	17	17	4
Forcible Rape	30	35	30	27	35	26
Robbery	156	101	107	121	89	90
Assault	1,192	1,229	1,287	1,057	946	1,051
Kidnapping	18	19	21	12	9	16
<i>Property Offenses</i>	1,399	1,551	1,595	1,401	1,255	1,275
Burglary	433	488	486	423	398	369
Theft	654	680	687	617	540	576
Motor Vehicle Theft	164	196	238	194	164	192
Forg Cks/ Acc Cards	134	182	178	157	147	131
Arson	14	5	6	13	6	7
<i>Drug Offenses</i>	1,333	1,574	1,850	1,858	1,756	1,662
Narcotics	806	874	829	1,011	906	861
Marijuana	84	120	180	157	135	112
Other Drugs	433	580	841	690	715	689
<i>Sex Offenses</i>	62	59	90	86	95	121
Misdemeanor Arrests	13,092	13,310	12,422	12,897	12,022	10,950
Assault and Battery	683	701	700	635	646	632
<i>Theft</i>	1,692	1,535	1,470	1,465	1,391	902
Petty Theft	1,603	1,437	1,342	1,362	1,289	822
Other Theft	83	88	130	96	99	78
Ck/ Acc Cards	6	10	8	7	3	2
<i>Drugs</i>	1,108	1,514	1,487	1,476	1,460	1,285
Marijuana	273	378	300	402	378	342
Other Drugs	835	1,136	1,187	1,074	1,082	943
Driving Under Infl.	4,163	3,690	3,435	3,766	3,587	3,473

Analysis

Reasons for the fluctuating numbers of criminal offenses vary. Many of the people who commit adult crimes are local, repeat offenders. The population growth within San Mateo County could be one cause for an increase in any type of crime, and increased housing costs and living expenses can generate criminal activity as well. A flourishing job market and low unemployment rates can surely help with a decrease in certain crimes. The passing of California's Proposition 36 allowed for petty drug offenses to be considered for treatment and not incarceration. Also, the rise in preventative programs has given alternative options to individuals who have, in the past, been a part of the criminal justice system.

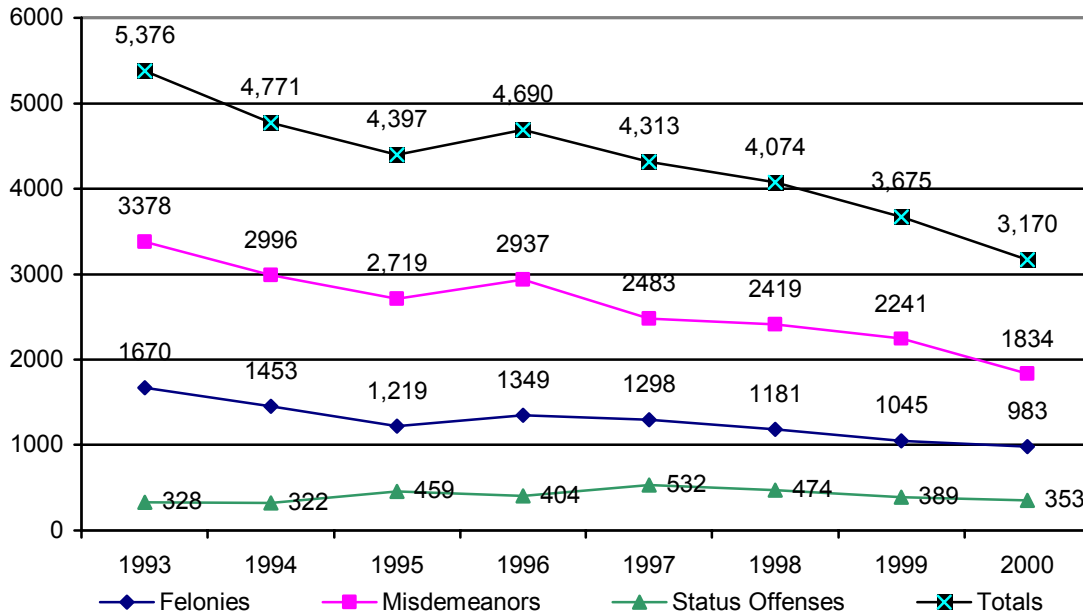
Juvenile Crime

Juvenile Arrests

The population of youth in San Mateo County, ages 10-17, has grown from 61,500 in 1993 to 76,900 in 2000, an increase of 25%. Although the County's population of youth is increasing, the number of arrests is decreasing. There were 5,376 juvenile arrests in 1993, and a total of 3,170 in 2000, an overall decrease of 41%.

Figure 3: Juvenile Arrests 1993-2000
Crimes – Felonies, Misdemeanors, Status Offenses

Source: San Mateo County 2000 Criminal Justice Profile



Gender

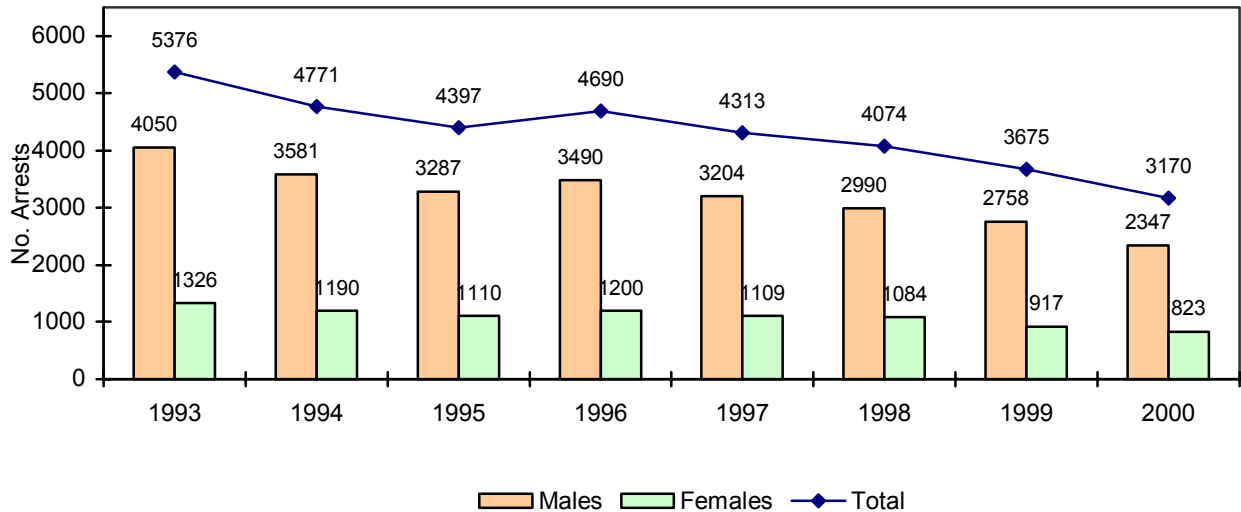
Since 1993, females have comprised around one-fourth of the total number of juvenile offenses. Although the female totals have remained fairly constant, the rate of boys arrested over the past seven years is decreasing faster than the rate of girls. When this data is broken down by gender, the need for enhanced local responses for female juvenile offenders is evident. For example, although the total number of arrests for juveniles decreased by 41% from 1993 to 2000, arrests for young women decreased by 38%, compared to 42% for their male counterparts.

San Mateo County is slightly higher than the state statistics relating to the percentage of female arrests compared to total juvenile arrests. In California, females represented 25.3% of the total juvenile arrests in 2000, while in San Mateo County females represented a slightly higher percentage of 26%. Figure 4 represents the total number of arrests for females and for males from 1993 to 2000.

Within most of the sub-categories for felonies, misdemeanors and status offenses, males represent a much higher percentage of the types of crimes committed than females. On some occasions, however, females are arrested for certain crimes at a comparable number with males. In the year 2000, the misdemeanor category with the highest number of offenses was theft at 512 arrests, and females

represented 46% of that total. Also, within status offenses, the only category in which females surpass males is that of Runaway, with females comprising 56% of that total in 2000. As Table 2 indicates, assault is the second highest committed misdemeanor offense in 2000, and females represent 26% of that total.

Figure 4: Juvenile Arrests by Gender
 Source: San Mateo County 2000 Criminal Justice Profile



Types of Crimes

The total number of local police contacts with juvenile offenders decreased by 13.7%, from 3,675 arrests in 1999 to 3,170 arrests in 2000. Misdemeanors decreased by 37.5%, felonies decreased by 27%, and violent felonies decreased by 11%. As described in Table 2, total violent felony offenses, which include homicide, forcible rape, robbery, assault and kidnapping, decreased 9.8% from 283 in 1999 to 255 in 2000. There were no homicides in the year 2000 and 5 forcible rape offenses, the lowest number in a decade. Although the number of violent offenses is lower in 2000 than what it was in 1996, these crimes currently represent a larger percentage of all felonies. In 1996, violent felonies comprised 21.3% of all felonies, while in 2000 they represented 26%. The percentage of felony weapons charges rose from 1996 to 1999 then fell 6.7% in 2000. Felony property offenses, which include burglary, theft, motor vehicle theft, forged checks and arson, rose 4.8% from 1999 to 2000.

The total number of felony drug offenses, including marijuana, narcotics and dangerous and other drugs, slightly decreased from 1999 to 2000. However, dangerous drug offenses increased from 24 arrests in 1999 to 28 in 2000 and misdemeanor marijuana offenses increased from 174 to 184 arrests in the same time period. Misdemeanor Driving Under the Influence (DUI) went down from 42 in 1999 to 34 in 2000, a 19% decrease, and misdemeanor alcohol related offenses also decreased. Another significant note is that misdemeanor Assault and Battery arrests continue to decline each year.

Table 2: Juvenile Arrests by Category 1996 – 2000

Source: San Mateo County 2000 Criminal Justice Profile

	1996	1997	1998	1999	2000
Status Offenses	404	532	474	389	353
% referred to probation	49.1%	52.6%	54.2%	62%	63.2%
Misdemeanors	2,937	2,483	2,419	2,241	1,834
Alcohol Related	295	224	245	224	191
Assault and Battery	531	428	376	370	337
Driving Offenses	89	42	35	26	44
Drug Offenses	260	278	218	229	208
Theft	974	790	759	682	512
Weapons	32	38	34	26	17
DUI	38	17	31	42	34
Felonies	1,349	1,298	1,181	1,045	983
Drugs	137	152	148	112	103
Violent Offenses	287	313	260	283	255
Sex Offenses	26	23	24	29	22
Property	706	660	606	452	475
Other Felonies	193	150	143	169	128
Total Crimes	4,690	4,313	4,074	3,675	3,170

Status offenses reached a high of 532 offenses in 1997, and then gradually decreased each year resulting in 353 offenses in 2000, a 33.6% decline. Status offenses include truancy, runaway, curfew violations, incorrigible juveniles and other offenses. As stated earlier, Runaway offenses are the only category that is higher for females than for the males. The overall decrease indicates the County is making progress in its responses to juvenile crime, although more may be needed in specific areas, as can be seen by the numbers in Table 2.

Analysis

Misdemeanors and felonies both peaked in 1996, yet similar to status offenses, showed a steady decrease each year after. The number of arrests for males and females replicated this decline. The three crime categories, felonies, misdemeanors, and status offenses, have all displayed a decline. Specific crimes within those categories may have increased, and were noted accordingly. The ages of juvenile offenders vary with the types of crimes committed, but as the youth get older the total number of arrests increase for felony, misdemeanor and status offenses. Depending on the types of crimes committed by certain ages, programs within the County can implement age-specific services and activities in order to prevent future delinquency.

Domestic Violence

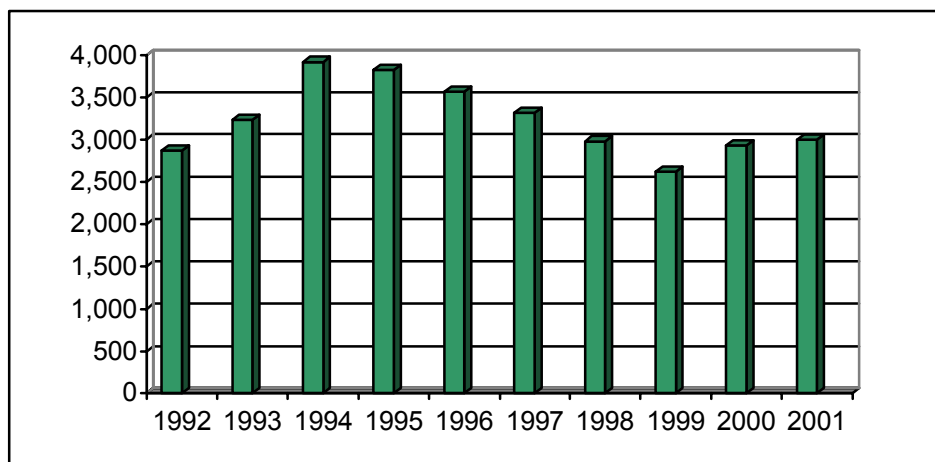
Domestic violence is a major problem in contemporary American society. It does not discriminate against any race, class, or level of society. Women and children are the most common victims of domestic violence, but the emergence of male victims is growing as well. The psychological, physical and behavioral problems caused by domestic violence can be repeatedly passed on to future generations. In the past, domestic violence was not an issue that was widely talked about. It was considered an embarrassment or a family problem. The emergence of feminism and the women's movement in the mid to late 1970's forced the materialization of coalitions and grassroots organizations that specifically addressed the needs of battered women. Over the past two decades, more has been done to alleviate and help end the incidents of domestic violence through policies, legislation, police and court actions, and the emergence of victim assistance centers and shelters. All this, along with increased public awareness, has helped to diminish the shame and secrecy associated with domestic violence.

In 1986, California law enforcement agencies had just begun to report the number of domestic violence-related calls to the Department of Justice. The Criminal Justice Council collects the same information from the local police jurisdictions on a monthly basis.

The number of domestic violence incidents in San Mateo County slowly decreased from 1994 to 1999, but then started a rising trend again in the year 2000. In 1992 there were 2,870 calls for assistance, while in 2001 there were 2,999. In this ten year period, the number has increased by 129 or 4.5%. The number of incidents, however, showed gradual increases and decreases over the years. Figure 5 below illustrates the trends of domestic violence-related calls for assistance in San Mateo County between 1992 and 2001.

Figure 5: Domestic Violence Related Calls for Assistance 1992 – 2001

Source: Criminal Justice Council - Compilation of Police Department data

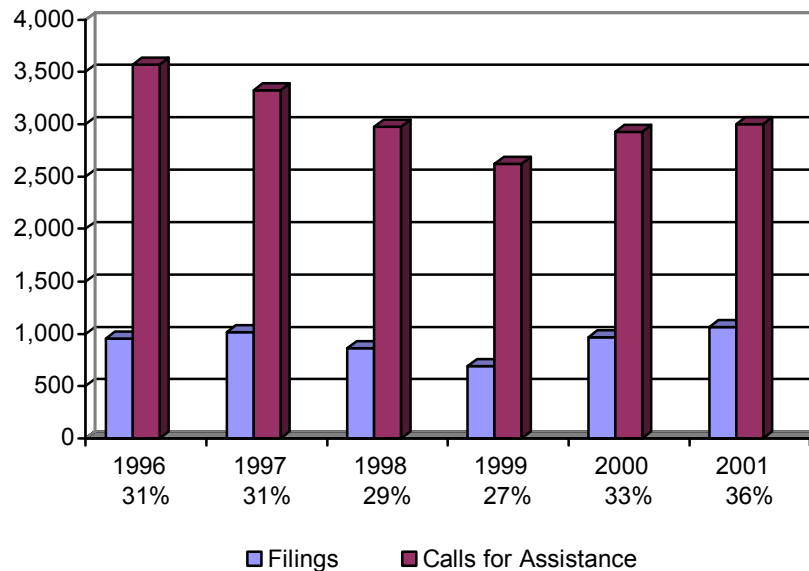


As stated in Figure 6 below, the total number of domestic violence related calls for assistance is far greater than the actual number of domestic violence cases filed by the District Attorney's Office. Police officers are being called to assist in such situations but the evidence

needed to file each case can sometimes be insufficient. Along with insufficient evidence, many victims recant their claims of abuse for fear of additional future abuse, financial difficulties, social and cultural pressures to keep the family together, among other reasons. This can make the prosecution of domestic violence cases very difficult. The number of filings in San Mateo County represents approximately one-third of the incidents throughout the stated years in the graph.

Figure 6: Domestic Violence Reported Incidents vs. Filings

Source: San Mateo County District Attorney's Office



From 2000 to 2001, the number of incidents increased 2%, from 2,927 to 2,999. There was also an increase of 3% in the number of cases filed, from 968 to 1,066. Although the number of incidents has steadily increased since 1999, there may be several reasons for this and not simply that the number of abusers has increased. Reasons for the increase may be the growing amount of information and resources made available to victims of domestic violence. Such information and resources may include victim shelters, safety plans, national 24-hour hotline numbers, and cell phone donations. These help victims realize that there is a way out and help for them to stop the abuse from recurring. The more information, knowledge and options these victims feel they have, the better the chances are that they will report the crimes, thus increasing these numbers. The growing number of policies, police and court actions, and legislations continues to make a positive difference in the area of domestic violence. Not only has the information and services available to the victims increased, but so have the number of reformatory programs available to abusers that can assist them with anger management and incident prevention skills and techniques.

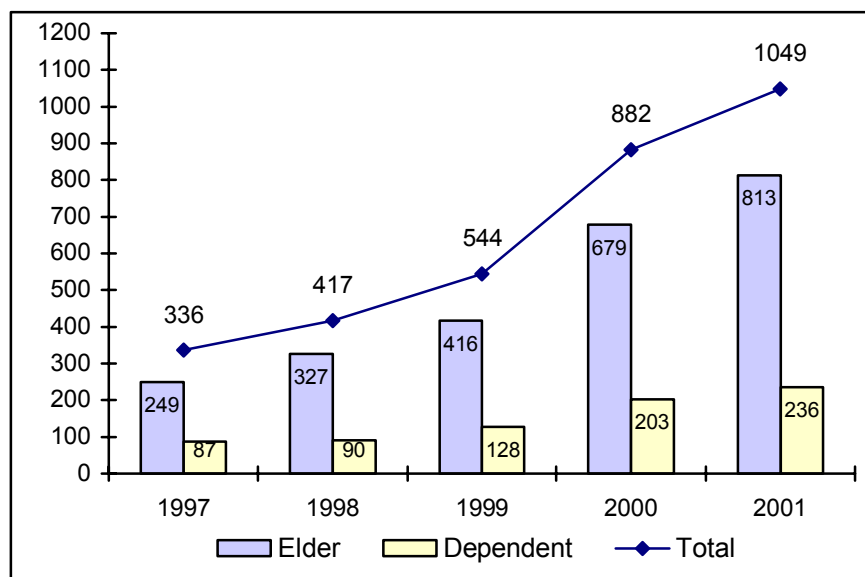
Elder and Dependent Abuse

As the awareness of criminal acts against the elderly and dependent adults increases, statistics show that more instances are being reported. More cases have appeared that allege financial, physical, and emotional abuse from family members, caretakers, and others. As shown in the figures below, the total number of Elder and Dependent Abuse Reports to the County's Aging and Adult Services has continued to increase each year, with 2001 reaching a new high.

In San Mateo County, it has not only been the numbers of abuse victims and reports that have risen, but the incidents of abuse being inflicted upon them have also increased. Many victims are violated in more than one way by their perpetrators which could play a significant part in the numbers increasing each year. These crimes include physical and sexual abuse, financial crimes and other mental and well-being crimes. In the year 2001, 1,049 elderly or dependent persons reported abuse, up from 336 persons in 1997. On a positive side, the number of psychological/mental abuse against the elderly has decreased 21%, from 144 in 2000 to 114 in 2001.

Figure 7: Elder and Dependent Abuse Reports

Source: San Mateo County Aging and Adult Services



Society has become increasingly aware of the crimes committed against the elderly. More funding and services have emerged in recent years, and clearly from the 2001 numbers, continued support is necessary. San Mateo County's Aging and Adult Services provides a continuum of services and emergency response to incident reports regarding the suspected abuse, neglect or exploitation of seniors and dependent adults.

The data in Table 3 below represents the types of abuse reported from 1998 to 2001. Each victim may have reported more than one type of abuse. The total number of abuse incidents has grown each year. The reported 560 abuse incidents in 1998 grew to 1,204 reported abuse incidents in 2001, a 115% increase. People are becoming more aware of the heightened vulnerability of these populations. Thus, the increased attention to crimes against the elderly and dependent adults may have played a factor in the rise in reported abuse cases.

Table 3: Types of Reported Abuse Per Year

Source: San Mateo County Aging and Adult Services

2001

<i>Types of Reported Abuse</i>	<i>Elders (65+)</i>	<i>Dependent</i>	<i>Totals</i>
Physical	133	52	185
Sexual	6	21	27
Financial	175	24	199
Neglect by Others	123	35	158
Self Neglect	349	115	464
Abandonment	16	5	21
Isolation	31	3	34
Abduction	2	0	2
Psychological/Mental	96	18	114
Total:	931	273	1,204

2000

<i>Types of Reported Abuse</i>	<i>Elders (65+)</i>	<i>Dependent</i>	<i>Totals</i>
Physical	125	61	186
Sexual	5	17	22
Financial	134	20	154
Neglect by Others	128	32	160
Self Neglect	254	81	335
Abandonment	18	4	22
Isolation	24	5	29
Abduction	0	0	0
Psychological/Mental	114	30	144
Total:	802	250	1,052

1999

<i>Types of Reported Abuse</i>	<i>Elders (65+)</i>	<i>Dependent</i>	<i>Totals</i>
Physical	96	56	152
Sexual	2	10	12
Financial	140	18	159
Neglect by Others	99	29	128
Self Neglect	97	19	116
Abandonment	19	2	21
Isolation	2	0	2
Abduction	0	0	0
Psychological/Mental	80	20	100
Total:	802	154	690

1998

<i>Types of Reported Abuse</i>	<i>Elders (65+)</i>	<i>Dependent</i>	<i>Totals</i>
Physical	102	31	133
Sexual	2	13	15
Financial	109	19	120
Neglect by Others	61	19	80
Self Neglect	48	16	64
Abandonment	18	1	19
Suicidal	0	1	1
Psychological/Mental	101	19	120
Total:	441	119	560

Child Abuse and Maltreatment

The abuse of a child is a horrendous crime that continues to be a universal problem. There are many forms of child abuse and very rarely is a child only affected by one of them. These San Mateo County victims are under the age of 18 and have been abused physically, mentally, sexually, have been neglected, or suffered harm. Per the State of California's Child Welfare Services data, 2001 saw the highest number of reported incidents in the last four years, with an increase of 12.5% from 2000. Table 4 below also shows that the total number of types of emergency responses at case disposition increased by 5% in 1999, then the numbers decreased in the year 2000 by 10.1%. Apparently, sexual abuse continues to be a type of child abuse that is increasing in numbers each year, whereas the other types of abuse remain relatively stable without any drastic increases or decreases over the four-year period. The data for the substantial risk category was unavailable for 1998 and 1999.

Table 4: Reason for Emergency Response at Disposition

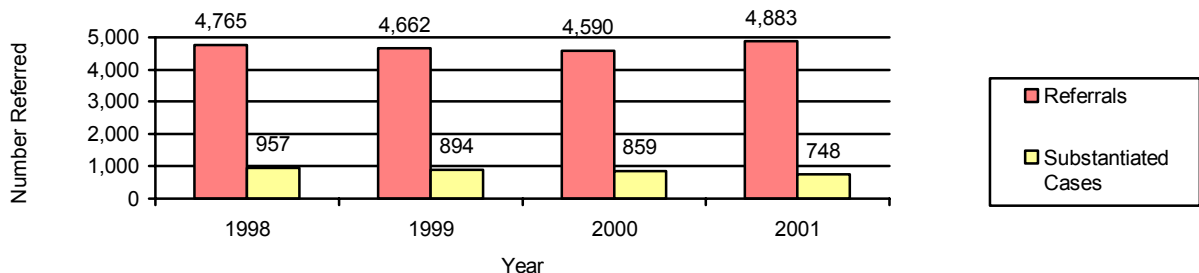
Source: State of California, Child Welfare Services, Year-end reports 1998-2001

Type	1998	1999	2000	2001
Sexual	556	621	648	663
Physical	1,541	1,593	1,428	1,543
Severe Neglect	216	142	114	116
General Neglect	1,137	1,377	1,320	1,329
Emotional Abuse	496	643	591	531
Exploitation	30	25	21	19
Caretaker Absence	759	660	412	450
At risk/Sibling Abuse	272	207	200	175
Substantial Risk	0	0	245	512
Invalid	5	7	7	0
Total	5,012	5,275	4,741	5,338

Figure 8 below shows a noticeable decline in the number of children referred to the County's Child Protective Services from 1998 to 2000, then a 6% increase in 2001. Substantiated cases have gradually decreased over the last four years with 2001 being the lowest number overall. Although the number of children referred had gone down each year except for 2001, the number of types of abuse actually increased from 1998 to 2001, as suggested in Table 4 above, excluding the decline in 2000.

Figure 8: Children Referred for Maltreatment and Substantiated Cases

Source: Research & Planning, San Mateo County Human Services Agency, July 2002



According to the report done by the Human Services Agency of San Mateo County (Research and Planning July 2002), approximately 15.3% of all child maltreatment referrals were substantiated in 2001. Of the substantiated cases, Physical Abuse remains the highest at 20.9%,

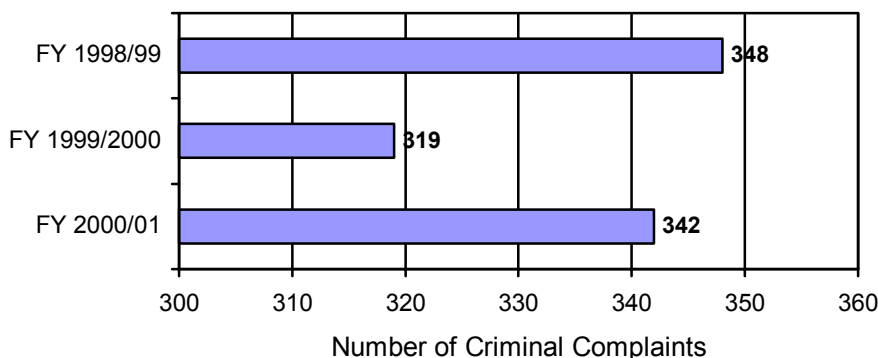
with General Neglect close behind at 20.2%; Caretaker Absence/Incapacity was at 17.9% and Sexual Abuse at 13.7% of substantiated cases.

Child abuse and neglect come in many forms, and can occur in families from every social and economic scale. Reasons for the abuse vary, but can include alcohol or drug abuse, financial stress and poverty, or just a history of abuse that has spanned generations. Whatever the reasons for child abuse, it is important that the cycle of abuse be broken. Victims of child abuse suffer not only immediately, but can also suffer throughout their lives into adulthood. On-going and long-term effects of the abuse can include suicide, depression, drug and alcohol abuse, behavioral problems, and criminal activity. It is important to educate families, children, and the community on the dangers and consequences of child abuse in any form.

Cases filed with the district attorney's office represent felonies and misdemeanors, including Penal Code Sections 273A(a), 273A(B), 273D, 245(A)(1), and other forms of willful harm or neglect against a child. The number of criminal complaints for abuse or neglect of a minor in San Mateo County is reflected in the Figure 9 below. In Fiscal Year 1998/1999, the County filed 348 complaints. This number dropped to 319 in FY 1999/2000, but then rose again to 342 criminal complaints in FY 2000/2001.

Figure 9: Number of Criminal Complaints for Abuse or Neglect

Source: Human Services Agency of San Mateo County



Analysis

It is apparent that child abuse in San Mateo County is still a serious issue. The year 2001 saw a gradual increase in the number of types of crimes against children as well as the number of referrals to law enforcement. The number of substantiated cases, however, was the lowest in the last four years, which is somewhat reassuring. As the local and national economic downturn continues, it is possible that the child abuse numbers in San Mateo County will continue to rise. If law enforcement, along with county and private service providers, continues to be responsive to these growing abuse numbers, as well as the possible economic decline, they may be able to prepare for and assist high-risk families in coping with the inevitable problems of job loss, increased cost of living expenses and homelessness.

San Mateo County School Dropout Rate

School dropout rates are an important factor when examining juvenile justice issues and delinquency. Increasing dropout rates may have an effect on juvenile crime, future unemployment and homelessness, and could lead to possible criminal activity as an adult. For the school year 2000/2001, San Mateo County had 26,256 students enrolled in grades 9 through 12, which is 10 more students enrolled than the previous year. The 2000/01 school year displayed a decrease in the number of dropouts in grades 9 – 11, as well as a decrease in the dropout rate. Students who dropout of school are less likely to find and keep a good job when they are older and may inhibit the prosperity of the county as a whole because the local workforce may be less qualified for the surrounding businesses.

Table 5 below shows the grade level dropout numbers and rates for the 1999/2000 and 2000/2001 school years. The numbers for both years reveal that the dropout rates and number of dropouts escalate for each succeeding grade level.

Table 5: Grade Level Dropout Rates

Source: California Department of Education

Grade	Enrollment		Number of Dropouts		One-Year Dropout Rate	
	99/00	00/01	99/00	00/01	99/00	00/01
9	6,716	6,967	86	74	1.3%	1.1%
10	6,602	6,725	99	73	1.5%	1.1%
11	6,484	6,400	192	111	3.0%	1.7%
12	6,004	5,898	244	308	4.1%	5.2%
Ungraded	440	266	0		-	
Total	26,246	26,256	621	566	2.4%	2.2%

Table 6 displays the number of dropouts and rates for each of the High School Districts in the County. Sequoia High School District has the highest dropout rate for the 2000/2001 school year.

Table 6: School District Dropout Rates 2000-01

Source: California Department of Education

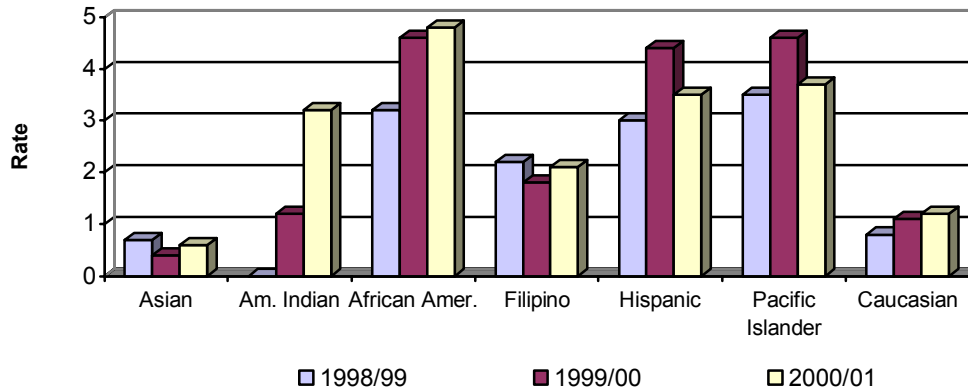
District	9-12 Enrollment	Number of Dropouts	One-Year Dropout Rate
Cabrillo	1,238	11	0.9
Jefferson Union HSD	5,557	107	1.9
La-Honda Pescadero	82	0	0.0
SMCOE	494	6	1.2
San Mateo Union HSD	8,203	123	1.5
Sequoia Union HSD	7,434	280	3.8
South San Francisco	3,173	39	1.2
Total	26,256	566	2.2

San Mateo County has a mix of diversified cultures and ethnicities. Some students from different backgrounds and cultures may find it difficult to adjust to the American schools if their parents are not accustomed to this country. It is important to help those families and youth adjust and ensure their attendance in school. Many programs exist in order to provide workshops and translations services to families trying to adapt to customs in this country. Figure 10 below shows us the dropout rates for each ethnicity, grades 9-12, based on the number of students enrolled within that ethnicity. Hispanics and Pacific Islanders show a lower dropout rate in 2000/01 than in 1999/00, but these rates are still higher than in the 1998/99 school year. Asian-Americans,

American Indians, African Americans, Filipinos, and Caucasians all displayed an increase in the percentage of student dropouts in 2000/01, and all are still higher now than in the 1998/99 school year, with the exception of Asian-Americans and Filipinos.

Figure 10: Dropout Rates by Ethnicity

Source: California Department of Education

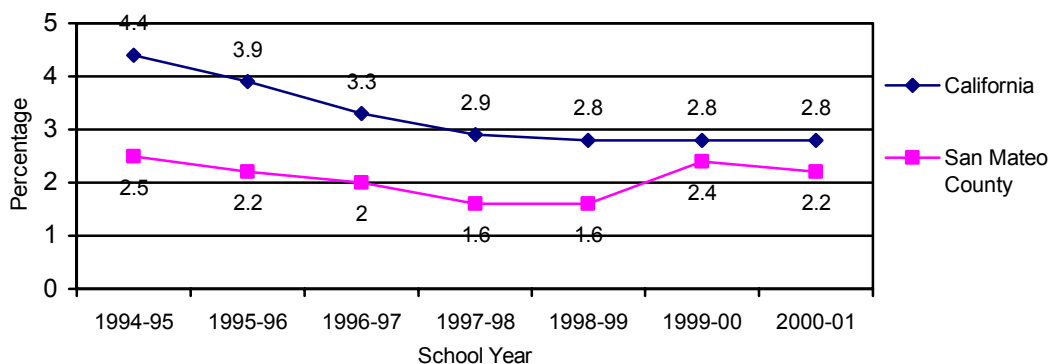


Grades 9 through 12, from the 1999/00 school year to the 2000/01 school year are examined in the graph above. The dropout rates are as follows: Asian-Americans increased from 0.4% to 0.6% from 1999/00 to 2000/01; American Indians increased from 1.2% to 3.2%; African American student dropouts increased from 4.6% to 4.8%; Filipinos increased from 1.8% to 2.1%; Hispanic student dropouts decreased from 4.4% to 3.5%; Pacific Islanders decreased from 4.6% to 3.7%; and Caucasian student dropouts increased from 1.1% to 1.2%.

For many years the dropout rate for San Mateo County, as well as California, for grades 9 through 12, has been decreasing. The 1999-2000 school year, however, displayed an increase on the local level, but declined again in the 2000-01 school year. State dropout rates have remained constant for the past three school years. Figure 11 exhibits the dropout rates over the past seven years, and also shows that San Mateo County remains below the state average.

Figure 11: Student Dropout Percentages

Source: California Department of Education

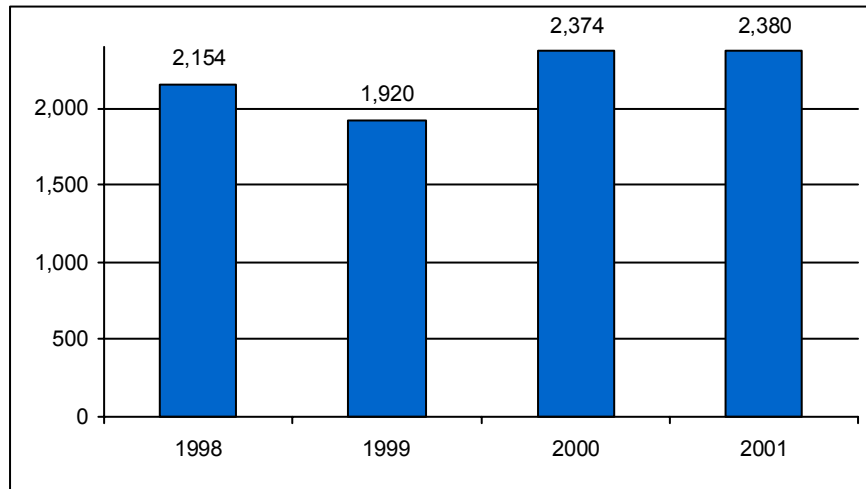


Vehicle Theft

San Mateo County has been experiencing a steady increase in the number of vehicle theft crimes over the course of the past three years, which is displayed in Figure 12 below. In 1998 there were 2,154 vehicle thefts in San Mateo County and 2,380 in 2001. This shows an overall increase of 10.5% in three years. Although 1999 showed a low number of 1,920 auto thefts, the number has been increasing since that year.

Figure 12: Number of Vehicle Thefts in San Mateo County 1998 – 2001

Source: San Mateo County Vehicle Theft Task Force

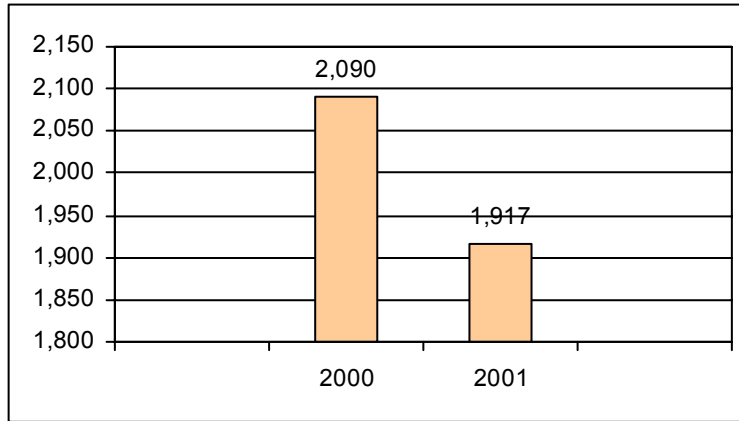


The information gathered for this report was made available by the San Mateo County Vehicle Theft Task Force (SMCVTTF). The SMCVTTF was founded on May 2, 1994. It is comprised of a Sheriff's Sergeant, a Sheriff's Detective, a California Highway Patrol Investigator, and a Millbrae and Burlingame Police Department Detective. The SMCVTTF is available 24 hours a day to assist other agencies with whom they work in order to provide continuous support in these types of crimes. They have also supplied training in this area to Officers, Deputies, Detectives, and other agents. The SMCVTTF is overseen by an advisory board.

San Mateo County experienced a less than 1% increase in vehicle theft from the years 2000 to 2001, whereas the State of California's vehicle theft rate increased by almost 13%. Figure 13 shows that in the year 2000, there was a recovery rate of 88% (2,090 vehicles recovered) while the year 2001 saw a rate of 80% (1,917) for vehicle theft recoveries. Vehicle recovery rates were not available for 1998 and 1999. These vehicle recoveries consist of the following four categories: intact, wrecked, stripped and burned. The number of vehicle recoveries does not necessarily reflect the same vehicles that were stolen.

Figure 13: Number of Vehicle Recoveries 2000-2001

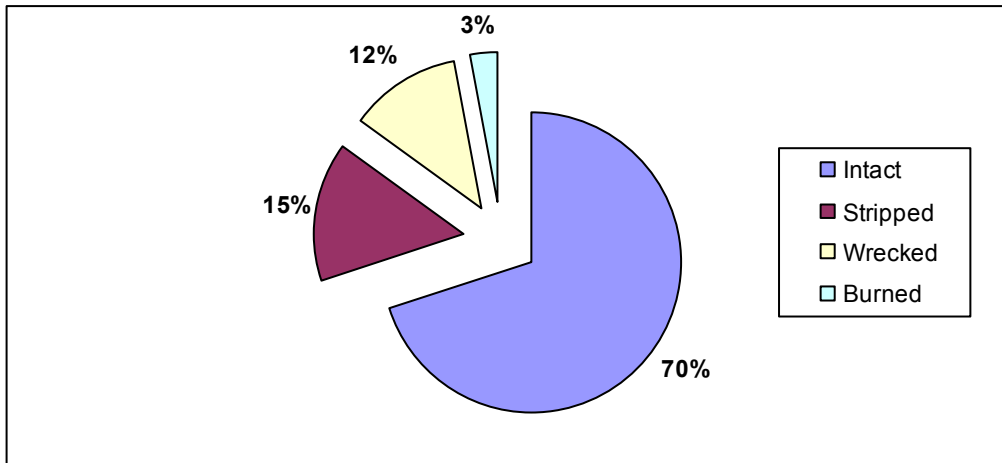
Source: San Mateo County Vehicle Theft Task Force



These figures represent the total number of vehicle thefts in San Mateo County as reported to law enforcement. As stated above, San Mateo County has experienced an 80% recovery rate during calendar year 2001. Of these vehicles, 70% have been recovered intact, 15% were recovered in a stripped condition, 12% were wrecked at the time of recovery, and 3% were recovered burned.

Figure 14: Types of Vehicle Recoveries 2001

Source: Sgt. James Tanner, San Mateo County Vehicle Theft Task Force, 2002 Report



Some possible solutions given by Sgt. James Tanner of the SMCVTTF are additional education and training for officers regarding the identification of car stripping operations, “shaved keys” used to enter and start vehicles, and more inquiries when comparing driver’s licenses and registration cards. Also, more information sharing with the District Attorney’s personnel could increase the amount of prosecutions for operating and/or maintaining a “chop shop” under Vehicle Code section 10801. Sgt. Tanner noted that there will be an increase in the number of business inspections (repair shops) currently being completed, pursuant to 2805 CVC. Additionally, the identification of residential garage “chop shops” could increase recoveries and prosecutions within the County.

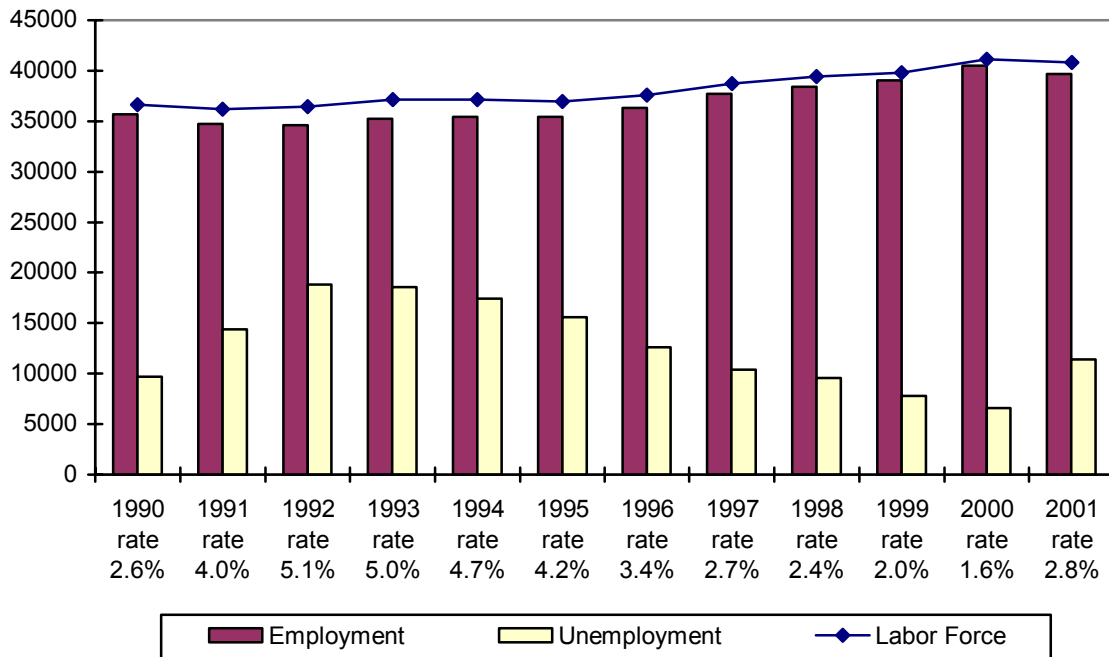
Unemployment Annual Averages

The national and local economies have gone through many changes over the years, which have led to varying effects on the unemployment rate in San Mateo County. The technology and internet industries brought affluence and jobs to the County. However, as dot-com businesses began to diminish in the past year, unemployment rates increased. An escalation in unemployment rates may sometimes lead to increased poverty and rising crime rates.

Between 1990 and 2000 there was a continuous increase in the labor force and employment and a decrease in unemployment, which then turned and began to rise in 2001. The labor force numbers slowly increased throughout the decade, with a steady climb from 1993 at 371,000, and reaching a height of 411,300 in 2000, a 10.2% increase. Then, in the year 2001, the labor force fell to 407,900, a 0.8% decrease from the year 2000. The overall number of employed in the County fell from 40,470 in 2000 to 39,650 in 2001. Local unemployment rates peaked in 1992 at 5.1% and the lowest points were in 1999 (2.0%) and in 2000 (1.6%). The year 2001 was the first time since 1992 that the unemployment rate grew. Compared with the year 2000, the number of unemployed shot up by 72% in 2001.

Figure 15: Employment Annual Averages for San Mateo County 1990-2001

Source: Employment Development Department, Labor Market Information Division



Rates reflect unemployment
 Employment and Labor Force data reflects numbers in the 100,000 range, while Unemployment reflects existing range.

Employment Categories

According to Sustainable San Mateo County (May 2001), United Airlines and Oracle continue to be the largest employers in San Mateo County, but small businesses are still predominant in the county with 98% employing less than 100 people, and 63% of those businesses employing less than 5 people per business. As of 2001, taken from the San Mateo County Quality of Life Survey (August 2001), current occupations were as follows: 28.4% professional/specialist;

20.6% executive/administrative/management; 8.4% service; 18.6% other; 11% technical; 7.1% support/clerical; and sales 5.9%. Most individuals are employed in the Service Sector which includes the software development and related computer services creating a 13% jump from last year. There has been a 50-year growth in the service sector at its highest reported. The high-tech sectors including biotechnology are gaining at increasing numbers even with recession and the unemployment increase in the County.

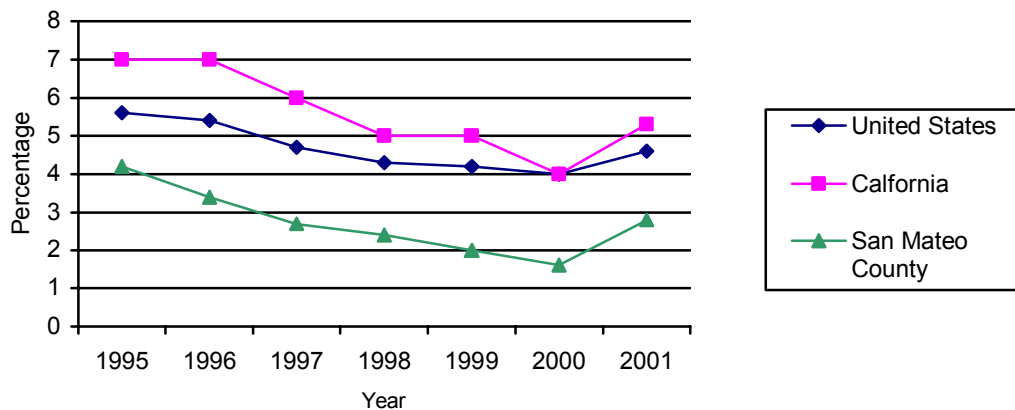
Unemployment

The two cities in San Mateo County with the lowest unemployment rate in the year 2001 were Half Moon Bay and San Carlos, both with a 1.6% average. The highest average of unemployment rested in two areas: East Palo Alto (7.2%) and North Fair Oaks (6.2%). These same two areas of the County displayed their highest unemployment rate in 1995, with East Palo Alto at 10.7% and North Fair Oaks at 9.3%. These two areas seem to remain above the national and state unemployment averages.

In the year 2000, San Mateo County experienced its lowest unemployment rate. Although the rate increased in 2001, the County's averages were still below the national, state, and neighboring counties' rates. As shown in Figure 16 below, the 2001 national unemployment rate was 4.6%, with California at 5.3% and San Mateo County at 2.8%. All three categories increased from the year 2000.

Figure 16: National, State & Local Unemployment Rates

Source: Employment Development Department, Labor Market Information Division



Analysis

Recent consumer confidence has decreased in numbers not seen since the last recession. The nation was moving toward a recession. San Mateo County's ranging unemployment and labor force rates are important indicators for law enforcement and policy makers. Most important is the direct impact unemployment and related financial issues play on crime, child abuse, homelessness and other social problems. The slowing national and local economies are directly related to each of the topics addressed in the Report.

Homelessness

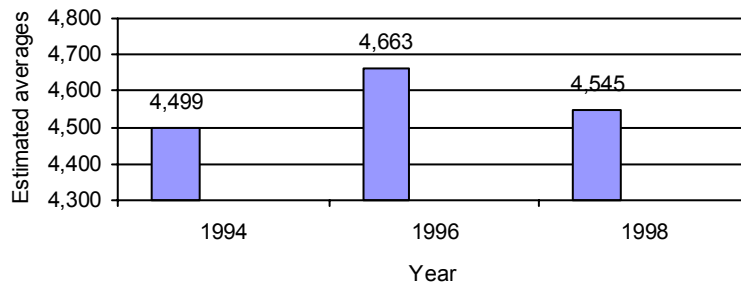
Introduction

In San Mateo County there are many agencies that help in aiding the homeless population, yet there is still a need to provide adequate and continual care as well as stable and permanent housing. Data shows that there is a need in San Mateo County for more housing and shelters for the homeless. A survey of San Mateo County (Human Service Agency) found that 76.9% of respondents rated the availability of programs and shelters for the homeless as “fair” or “poor”. The rise in housing prices may lead to displaced individuals and an increased need for affordable housing.

Figure 17 provides the numbers of the homeless population assessed for San Mateo County. During the four-year period of 1994-1998, the average was 4,569 people. Because of the recent decrease in available and affordable housing in San Mateo County homeless numbers may increase.

Figure 17: Estimated Number of Homeless in San Mateo County

San Mateo County Human Services Agency, Unduplicated Homeless Count.

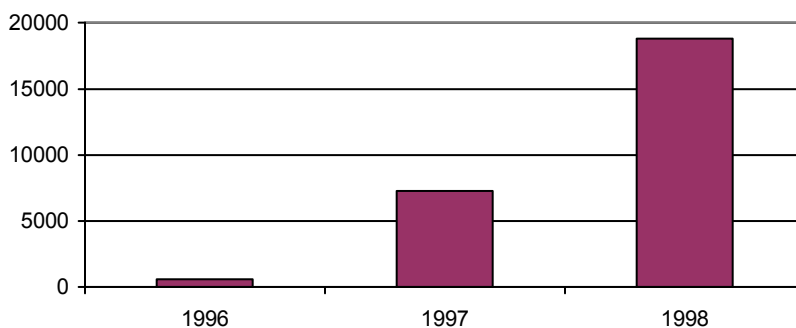


The latest available data on homelessness in 1998 shows 4,545 homeless, consisting of 3,694 adults and 851 children. In the last decade, the homeless population has remained fairly consistent, yet recently adult numbers have increased and youth numbers have decreased. It is also believed that “children as a group may have been undercounted”. The Human Service Agency Center on Homelessness in 2002 conducted a one day count that surveyed a variety of programs to find out who presented themselves as homeless for that day; the total count was 1,398 individuals. The Human Service Agency’s Office of Housing “estimates that between 500 and 800 people are homeless on a given night, and over 150 are on the street or living in cars”.

According to the Sustainable San Mateo County Yearly Report Card, May 2001, the majority of homeless or 85.2% have been homeless between one month and one year. A more common occurrence in San Mateo County is displacement. Not included in the most recent 1998 homeless count, but whose numbers will surely continue to increase with greater housing costs, is the situation where individuals and families live “doubled-up” with friends or relatives. These people run a greater risk of relocating out of the County or becoming homeless at some point due to these potentially unstable situations. Figure 18 shows the dramatic increase of doubled-up households from 1996-1998.

Figure 18: Doubled-Up Households

Source: San Mateo County Human Services Agency, 1998 Unduplicated Homeless Count



Housing

According to the 2001 County Assessment-Health & Quality Of Life in San Mateo County, “San Mateo County continues to be one of the least affordable housing and rental markets in the United States”. There was a 26% average rate of increase of prices of single-family homes from \$478,190 in 1999 to \$601,325 in 2000. In 2000, the median cost of a single-family detached house was \$600,604 and dropped in 2001 to \$590,000, yet the average was \$807,454. Then there was a decrease of 18% in housing to \$590,000 in 2001. While housing prices fluctuate, a family who makes \$54,800 or less per year is considered a low income family.

Rents have increased more than 60% in the past five years. In 2001, Fair Market Rent for a one-bedroom was at \$1,154 and \$1,459 for a two-bedroom unit. Fifty-eight percent of renters in San Mateo County are unable to afford Fair Market Rent. A San Mateo County resident would have to earn an hourly wage of \$28.06, working 40 hours per week in order to afford a two-bedroom unit at Fair Market Rate (2001 Community Assessment-Health & Quality Of Life in San Mateo County). Figure 19 displays the median and the average housing prices from 1995 to 2001 in San Mateo County. In March of 2001, the average rent for a two-bedroom unit was \$1,964, which increased 27% in one year or 56% in three years.

Figure 19: Housing Prices for San Mateo County
Housing Leadership Council of San Mateo County

